

A photograph of a park area with lush green trees in the foreground and a modern building with large windows in the background. A man in a suit is walking on a path on the left side of the image. The text is overlaid on a semi-transparent blue background.

CHICAGO PARK DISTRICT
CLARENDON
COMMUNITY CENTER PARK
COMMUNITY MEETING

2/4/2019



Introduction (10 min)

Presentation (45 min)

- Design goals
- Historic analysis summary
- Community meeting summary
- Stakeholder analysis
- Building options

Q&A (20 min)

Open House (30 min)

Meeting Agenda

Design Goals



- **Multi gen**
- **Built to last**
- **Sustainable**
- **Culture and performance**
- **Historical vitality**



inclusive/multi-gen



built to last



sustainable



culture & performance

Community



Celebrating May Day & Founder Day
Each year the celebration is held in one of our historic buildings and features a variety of events, including a parade, a concert, and a fireworks display. The celebration is a great way to celebrate the history of the college and the community.

The Soccer Club
The Soccer Club has a long history at the college and has been a part of the community for many years. The club has many talented players and coaches who have helped to build a strong tradition of soccer at the college.

Homecoming
Homecoming is a major event at the college and is celebrated with a variety of activities, including a parade, a concert, and a fireworks display. The celebration is a great way to celebrate the history of the college and the community.

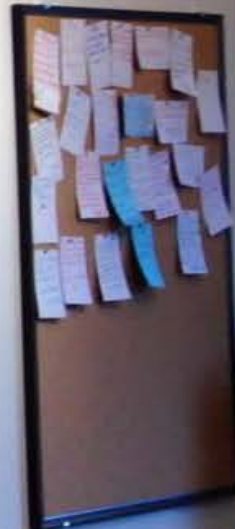
Elon
Elon is a small town in North Carolina that has a rich history and a strong sense of community. The town is home to the college and has many beautiful buildings and landmarks.

Elon College
Elon College is a private Christian liberal arts college located in Elon, North Carolina. The college has a long history and a strong tradition of excellence in education and research.

Elon University
Elon University is a private Christian liberal arts college located in Elon, North Carolina. The university has a long history and a strong tradition of excellence in education and research.

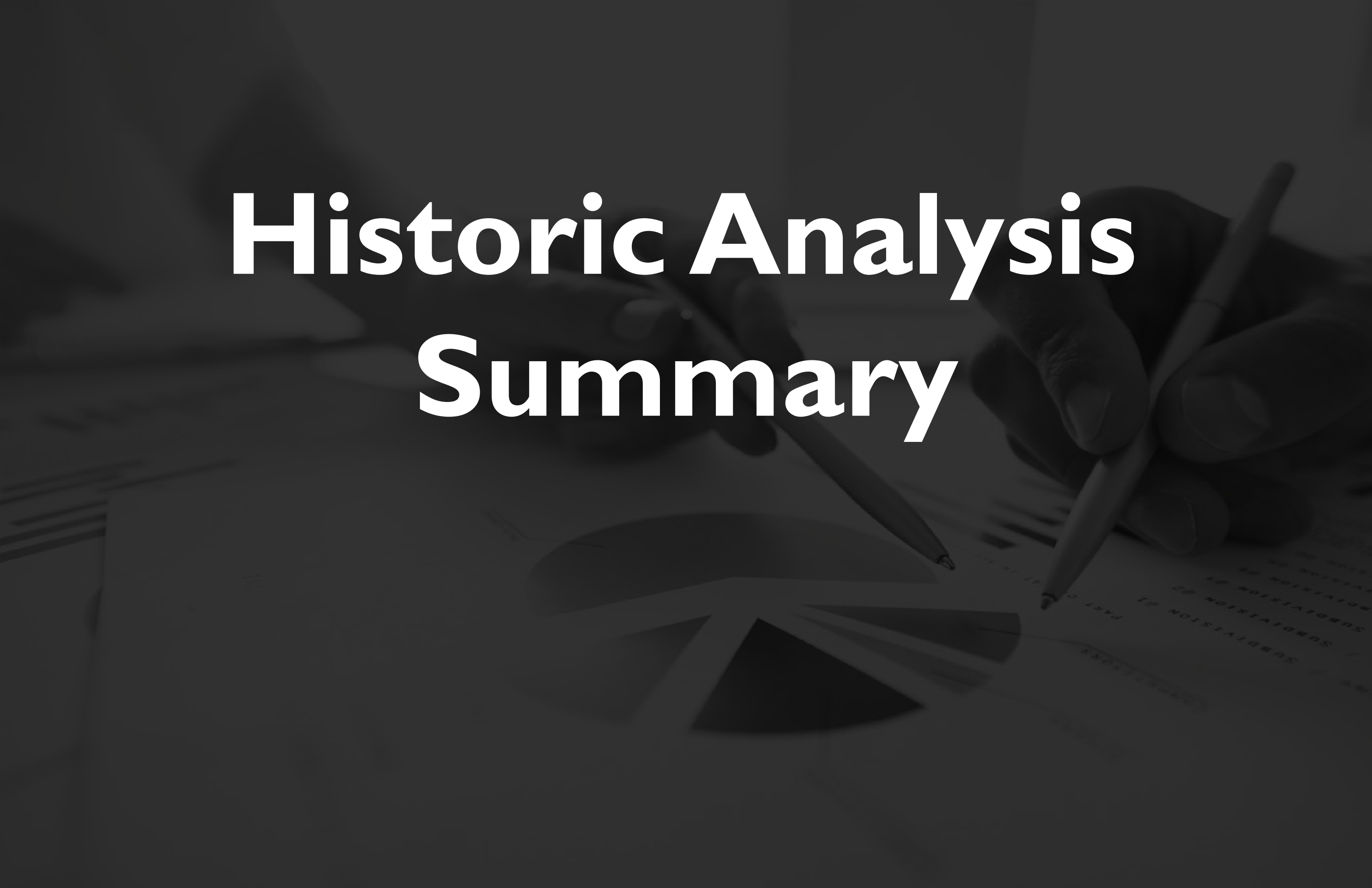
Elon College
Elon College is a private Christian liberal arts college located in Elon, North Carolina. The college has a long history and a strong tradition of excellence in education and research.

Elon University
Elon University is a private Christian liberal arts college located in Elon, North Carolina. The university has a long history and a strong tradition of excellence in education and research.

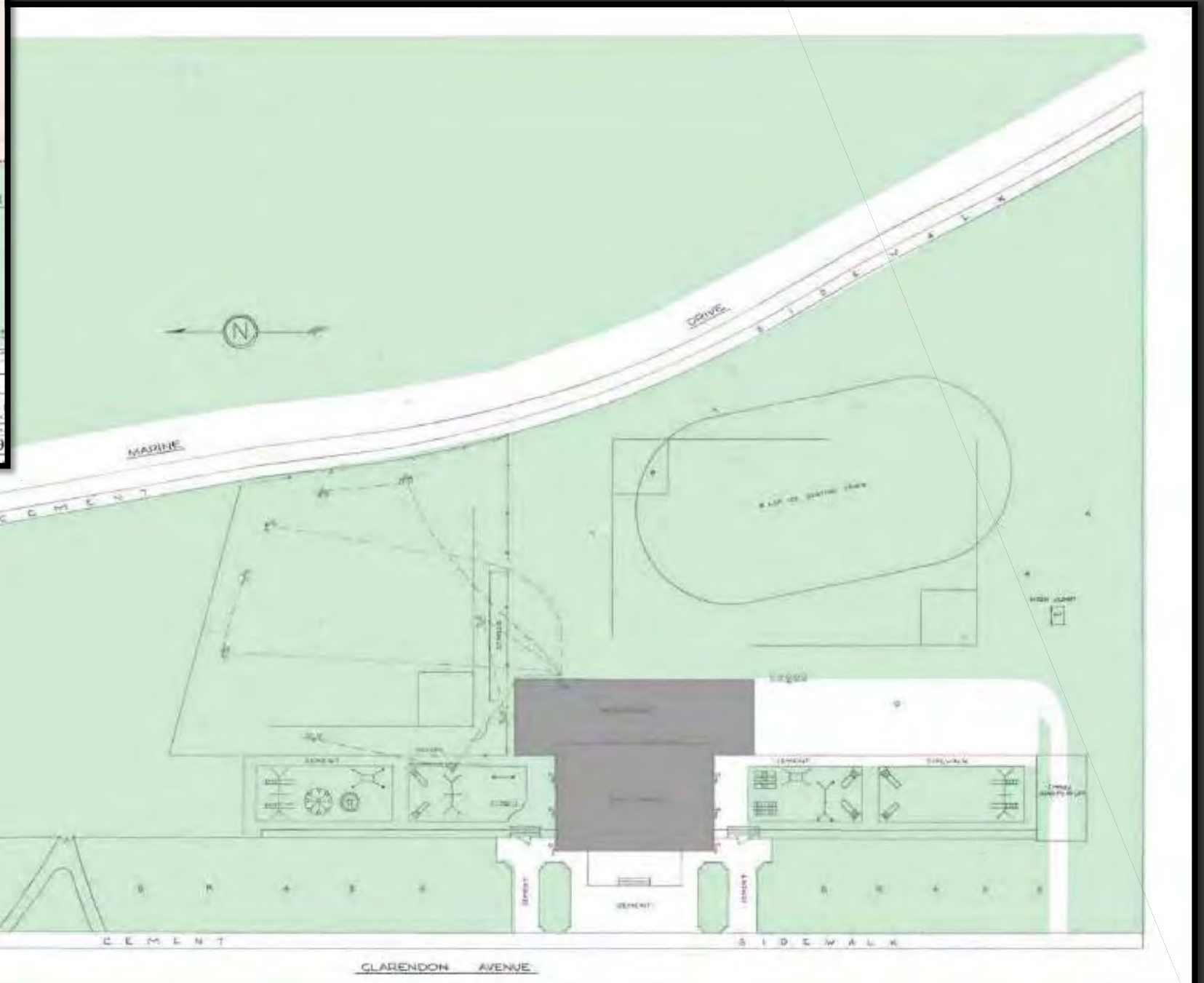
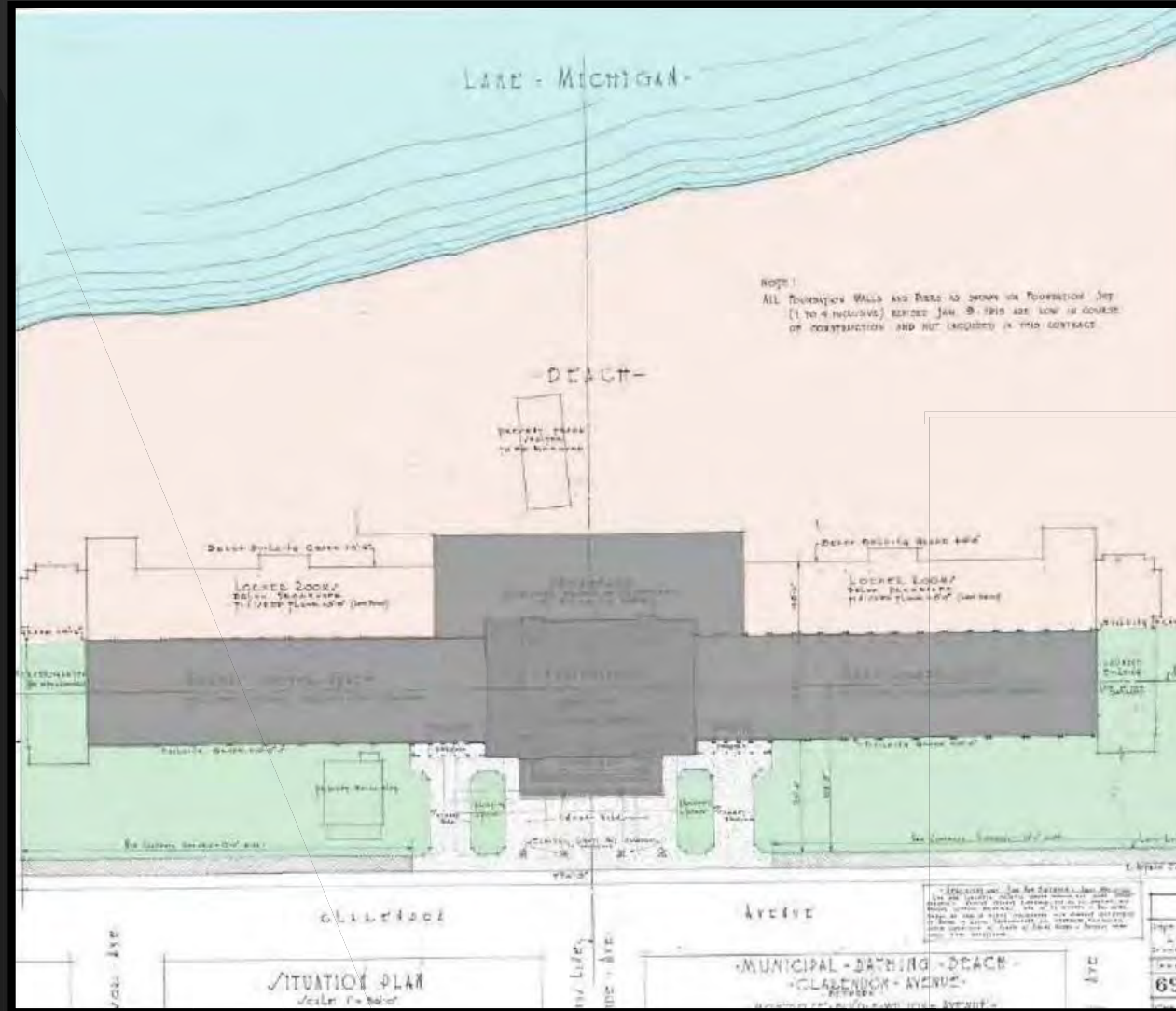


historic vitality

Historic Analysis Summary

The background is a dark, grayscale image. It shows a hand holding a pen, positioned as if about to write on a document. The document contains a pie chart with several segments and some text, including the words 'SUBDIVISION #1' and 'PART 0'. The overall aesthetic is professional and analytical.

Historic Analysis



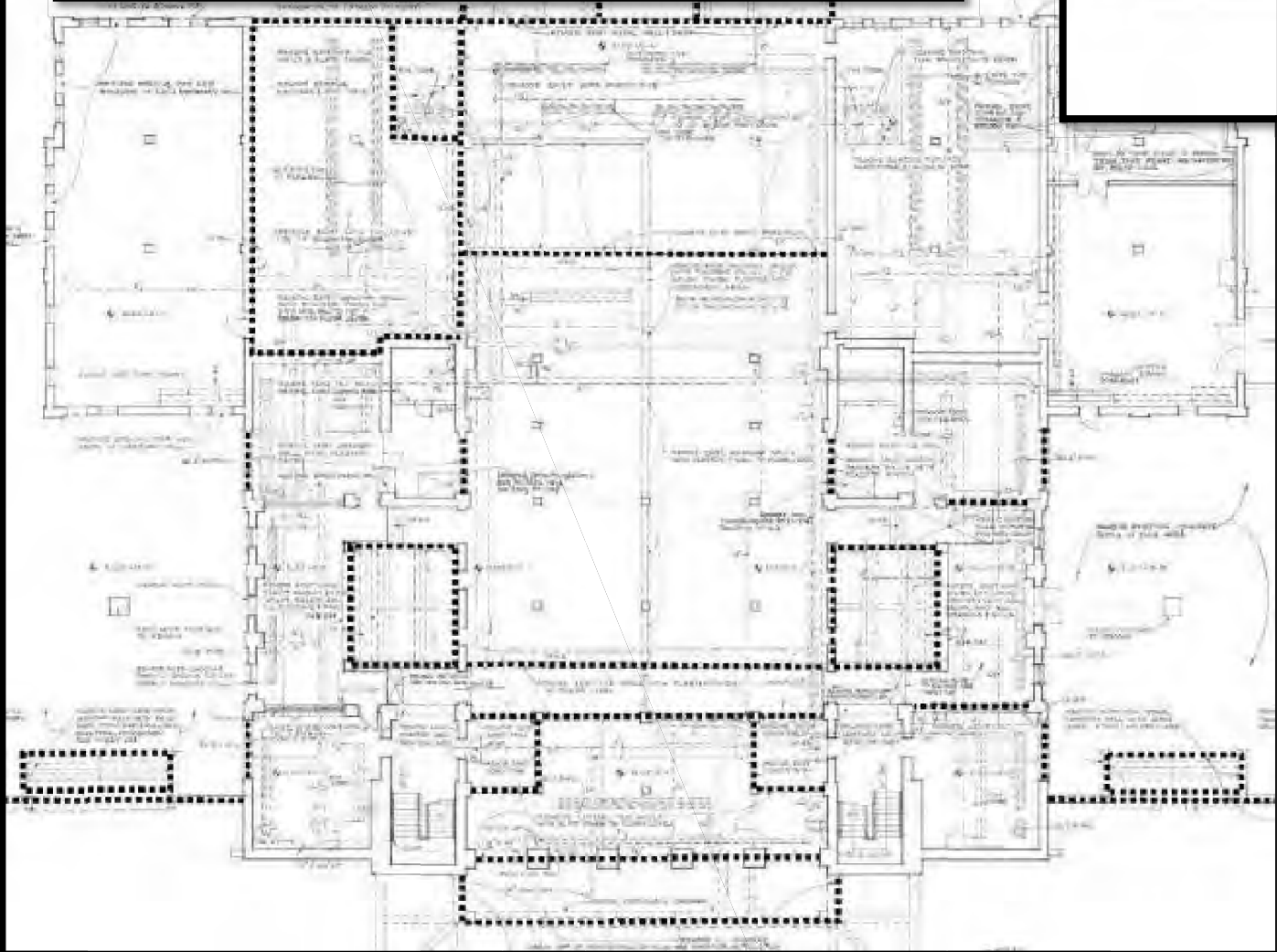
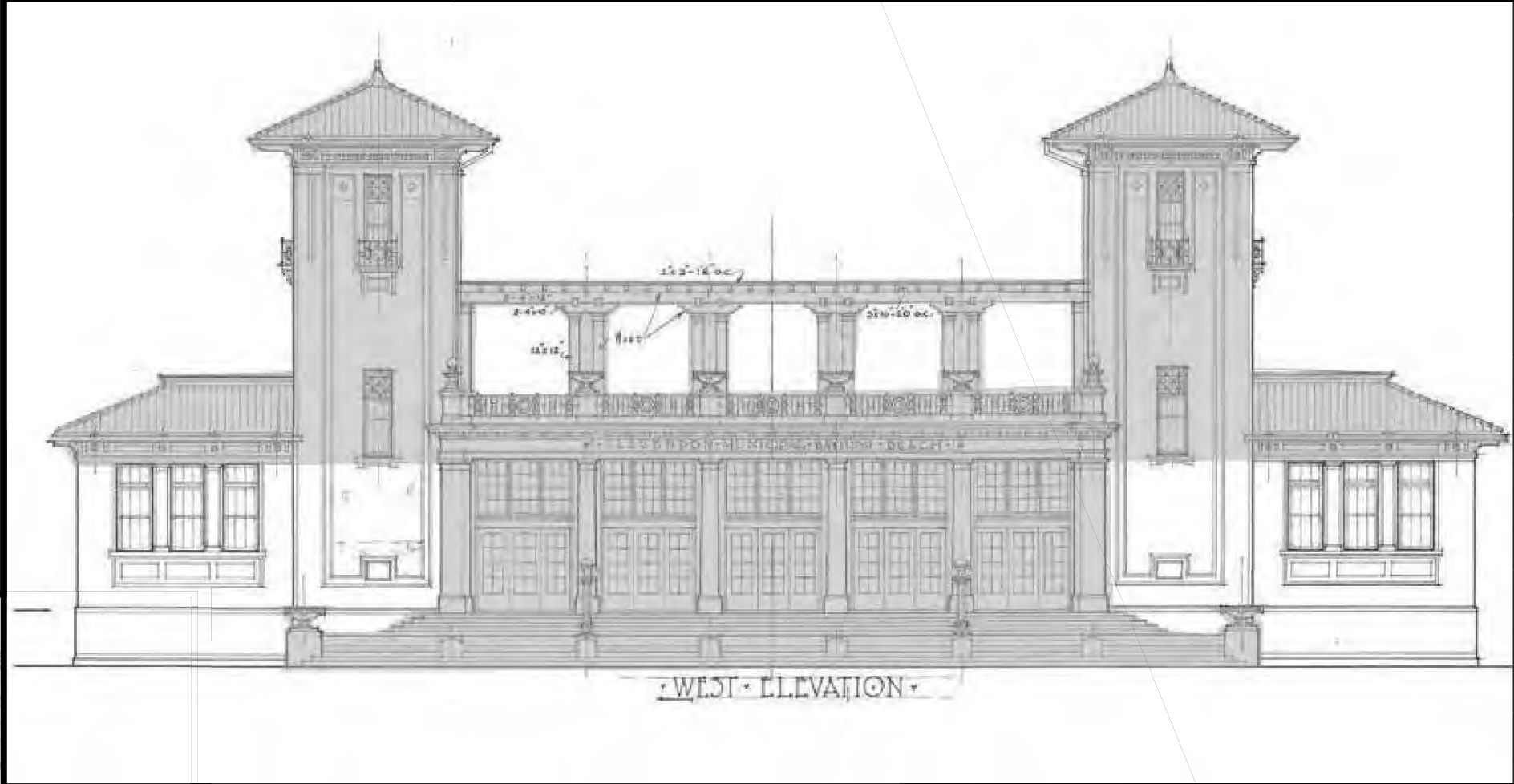
Historic Analysis



Historic Analysis



Historic Analysis

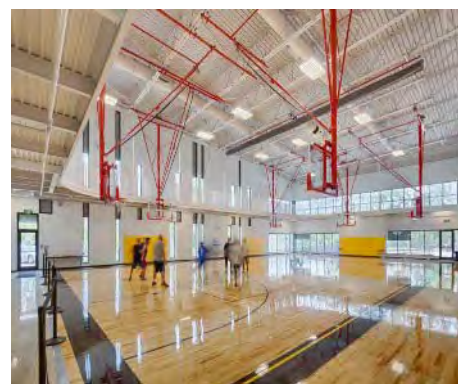
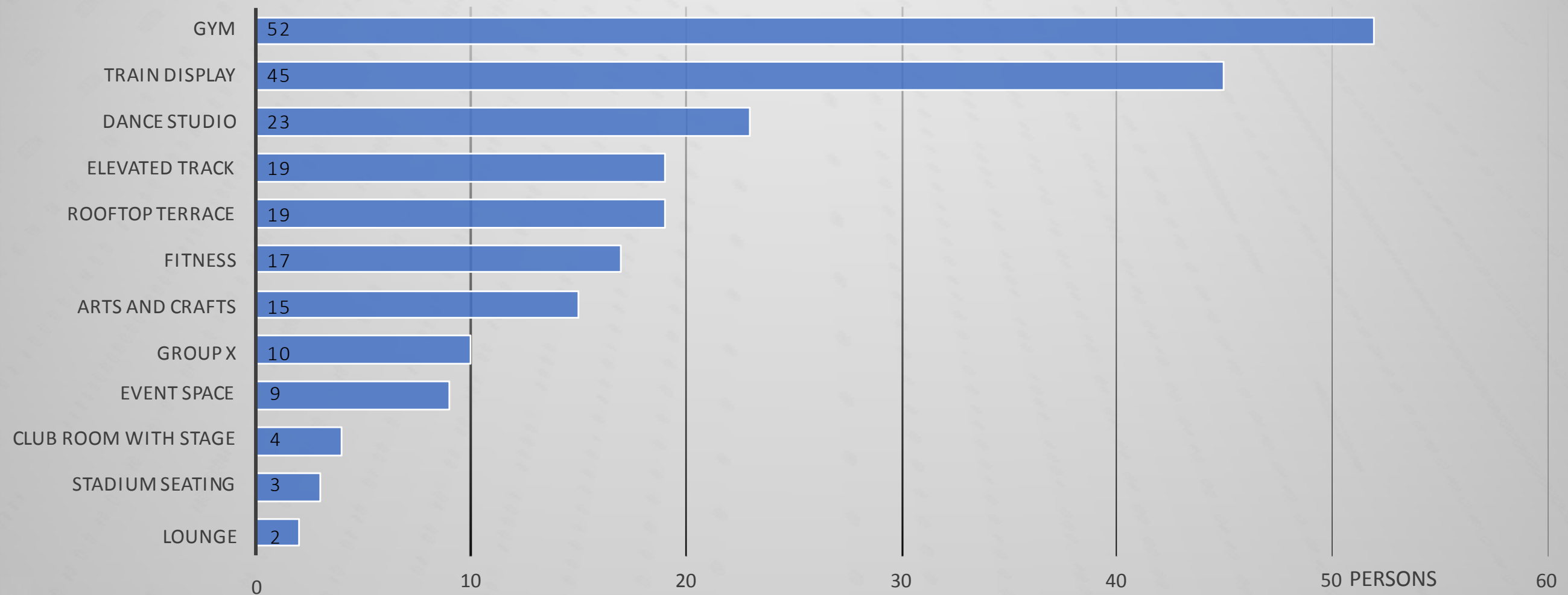


The background is a dark, grayscale image showing hands writing on documents with pens. A pie chart is also visible in the lower center. The text 'Community Meeting Summary' is overlaid in white.

Community Meeting Summary

Program Preference

CORE BUILDING PROGRAM PREFERENCE



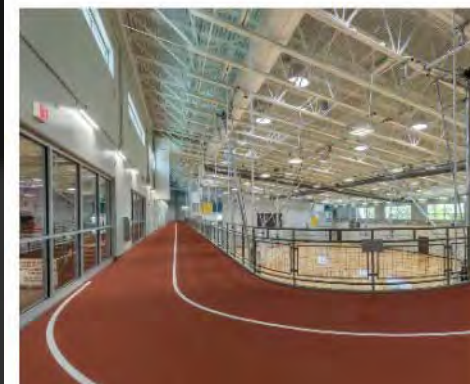
GYM



TRAIN DISPLAY



DANCE STUDIO

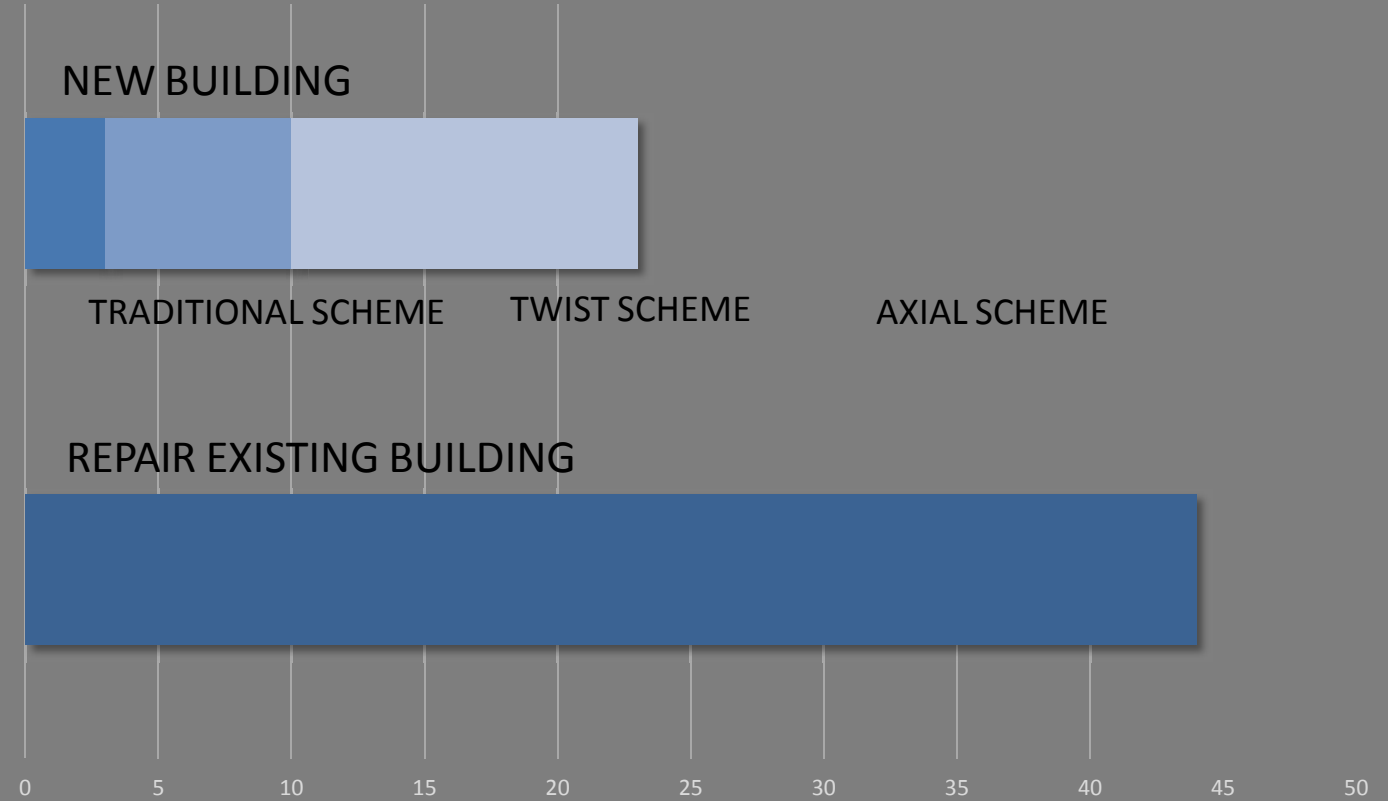
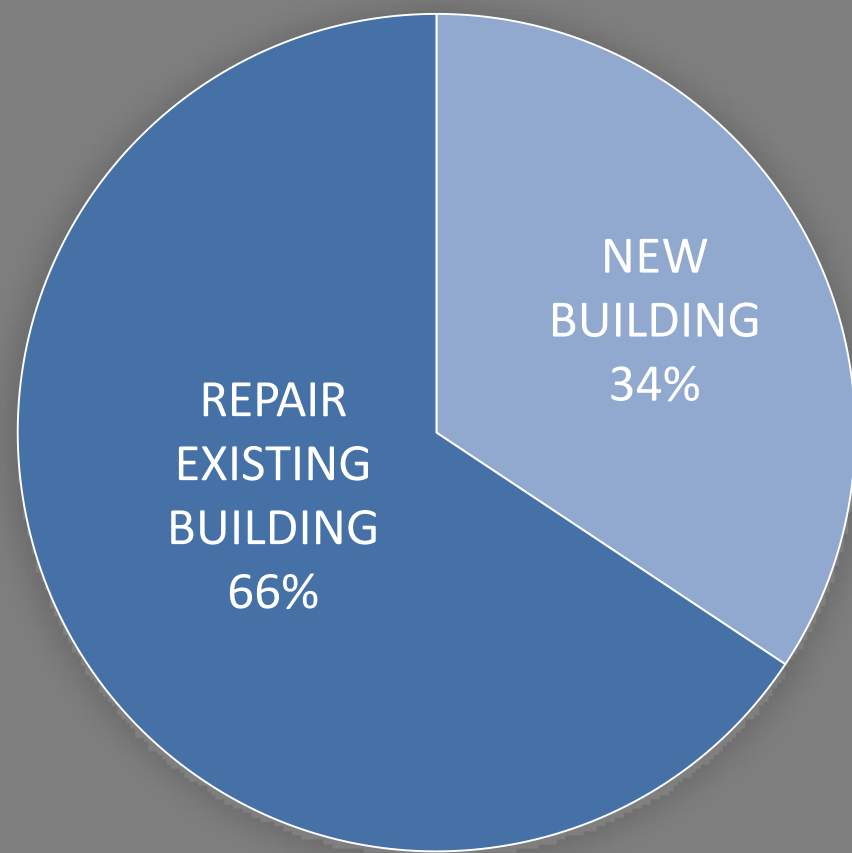


ELEVATED TRACK

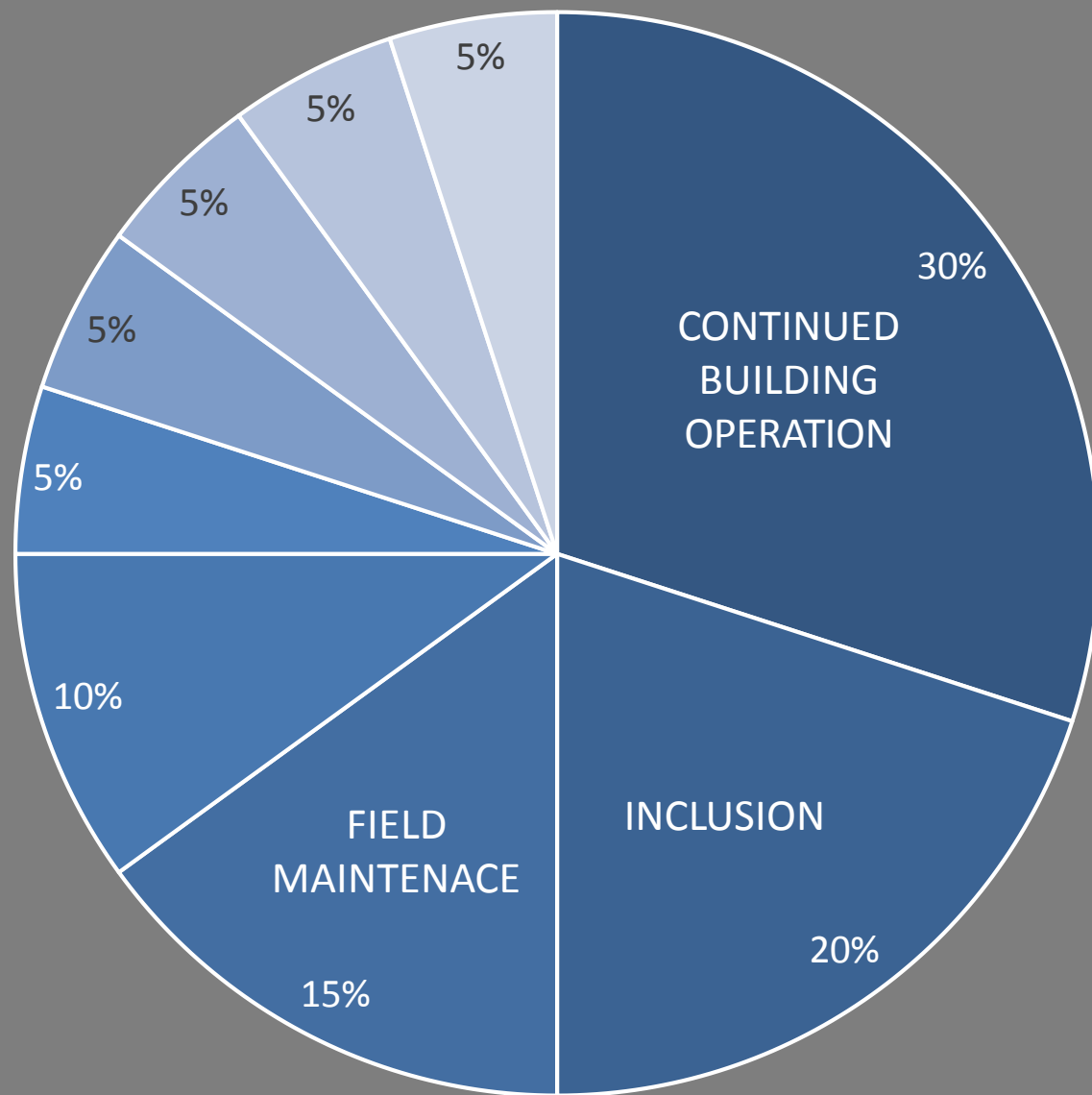


ROOFTOP TERRACE

Building Preference



Attendee Comment Data



- Concern with contunied building operation during construction - 30%
- Request for more inclusion in planning process - 20%
- Improvement and maintenance of baseball fields - 15%
- Practical suggestions for facility improvement - 10%
- Interest in new building - 5%
- Interest in historic restoration - 5%
- Interest in renovaton - 5%
- Interest in weighting of the options - 5%
- Request to include kids in planning - 5%

Stakeholder Analysis

Stakeholder List

Garfield-Clarendon Model Railroad Club

Weiss Hospital

Buena Park Neighbors

Chicago Theater Softball

Lakeview Towers

Chicago Sport & Social Club

Clarendon Park Neighbors

CMSA Open Sunday Softball

Preservation Chicago

Kuumba Lynx

Christopher House Youth Leadership Program

Institute Of Cultural Affairs - USA

Players Sports Group

Lakeside Area Neighbors

Stakeholders were interviewed between Dec 2018 - Jan 2019

Questions Posed:

Q: What is your involvement with Clarendon Park?

A: Typical Answers: Youth Programs, Meetings, Clubs, Sports

Q: How do you generally travel to get to the park?

A: Typical Answers: Walk, Bike, Drive, Public Transit

Q: How often do you use the District's parks and facilities? every day, once a week, once a month, once a year?

A: Answers Range from every day to infrequently

Q: What activities do you participate in at the park?

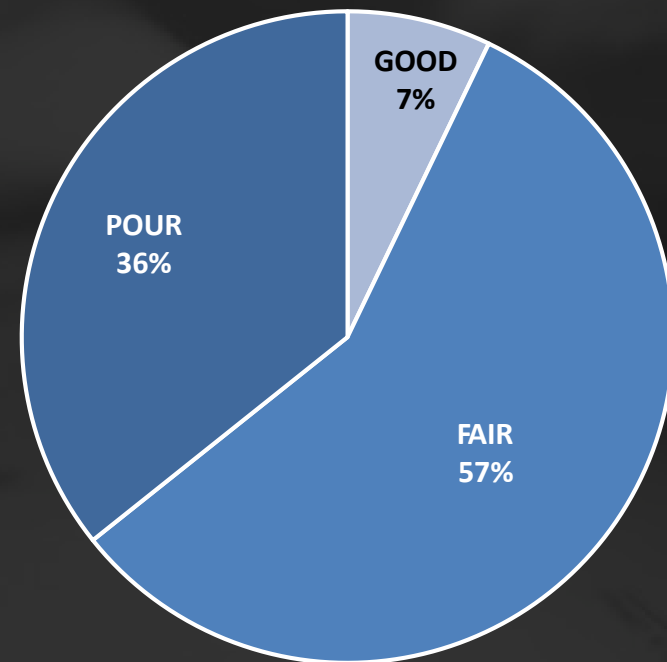
A: Typical Answers: Youth Programs, Meetings, Clubs, Sports

Q: What do you feel are the greatest assets of the Clarendon Park Fieldhouse? What makes you proud of this building?

A: "Park acts as a community center for all income levels, ages, races, and backgrounds."

Questions Posed:

Clarendon Park Fieldhouse Condition



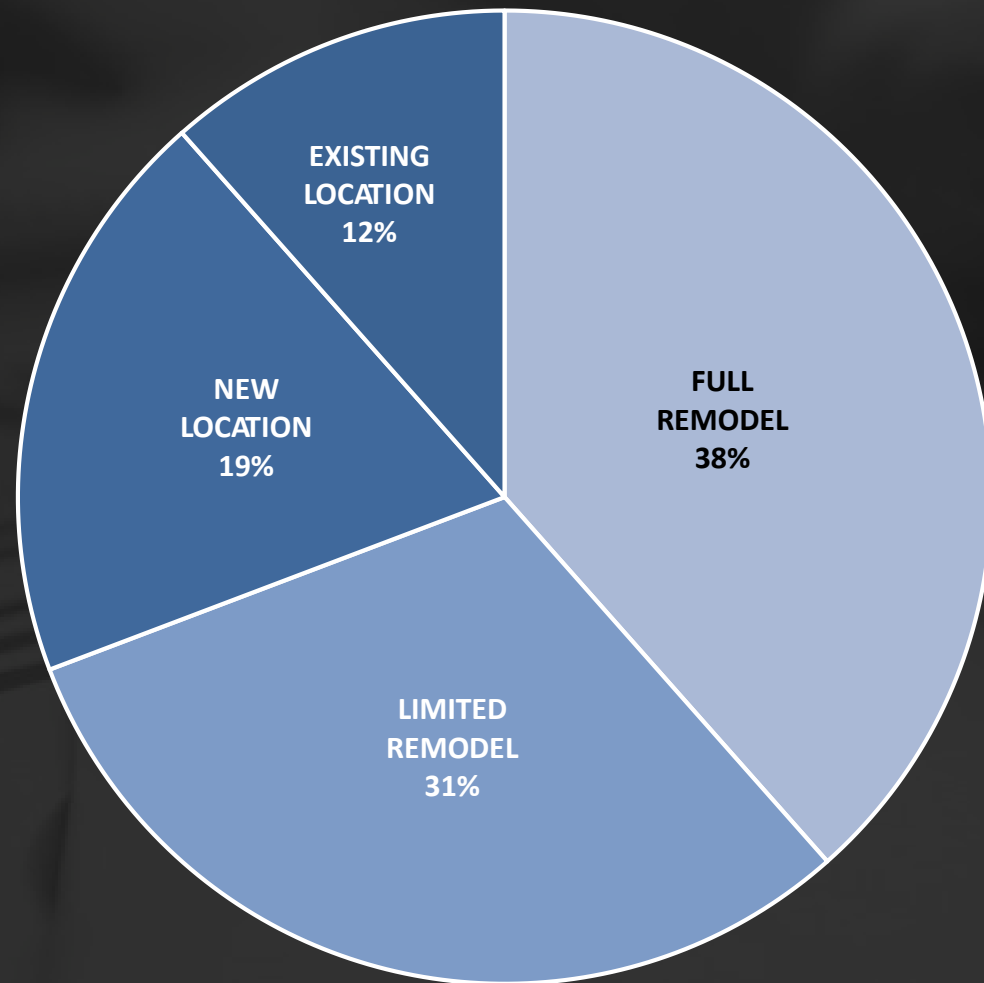
Q: How would you rate the quality of the Clarendon Park Fieldhouse, and why?

A: 1 vote for good condition; 8 votes for fair condition; 5 votes for poor condition.

Q: What is the most memorable element or experience at Clarendon Park?

A: "... sister was diabetic with a universal blood type and received a new kidney from a member of the softball league. CTS saves lives."

Questions Posed:



Q: Prioritize your building option preferences.

5 votes for Existing – Full Remodel Option

4 votes for Existing – Limited Remodel Option

2.5 votes for New Construction – New Location

1.5 votes for New Construction – Existing Location