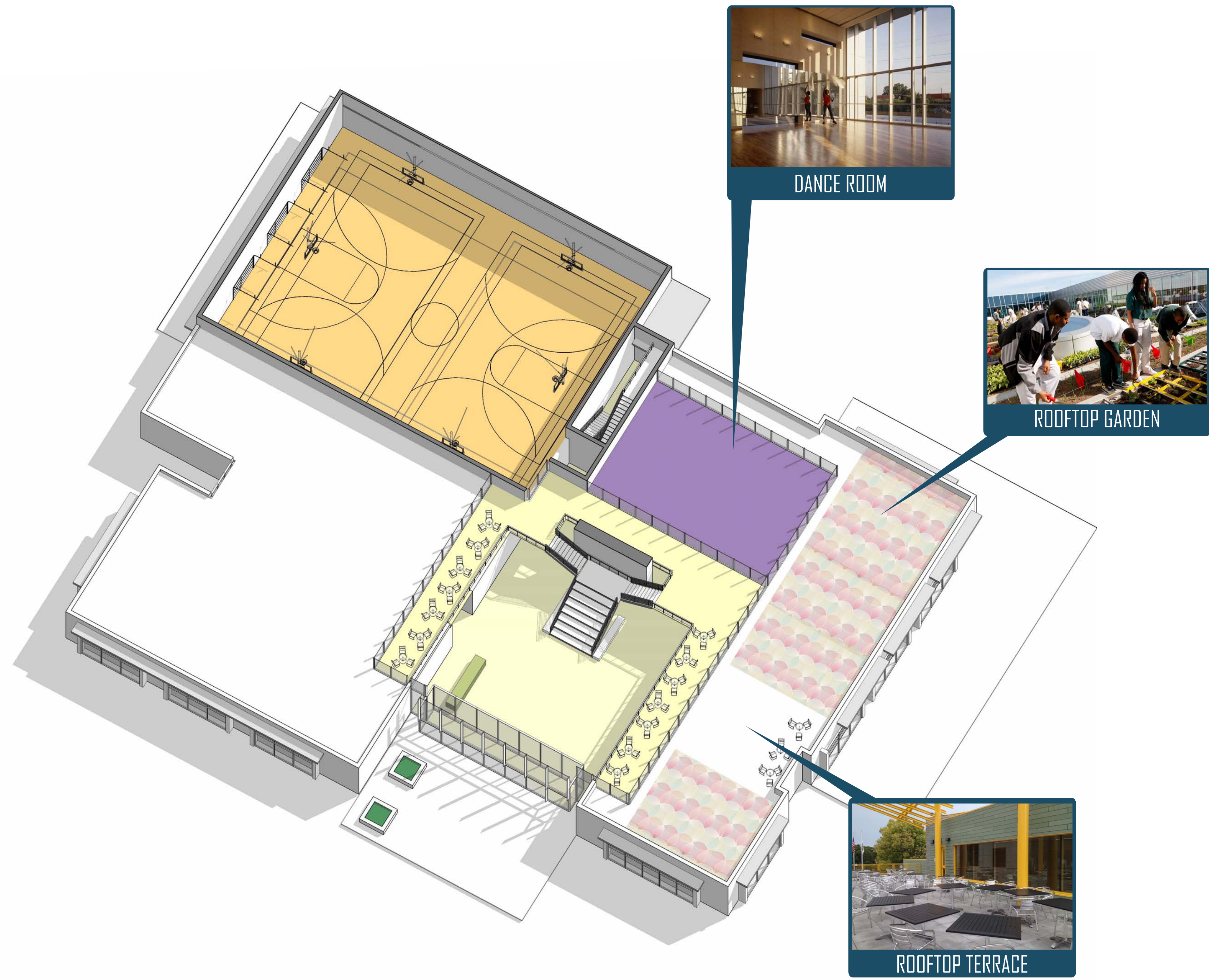


# NEW BUILDING: EXISTING LOCATION

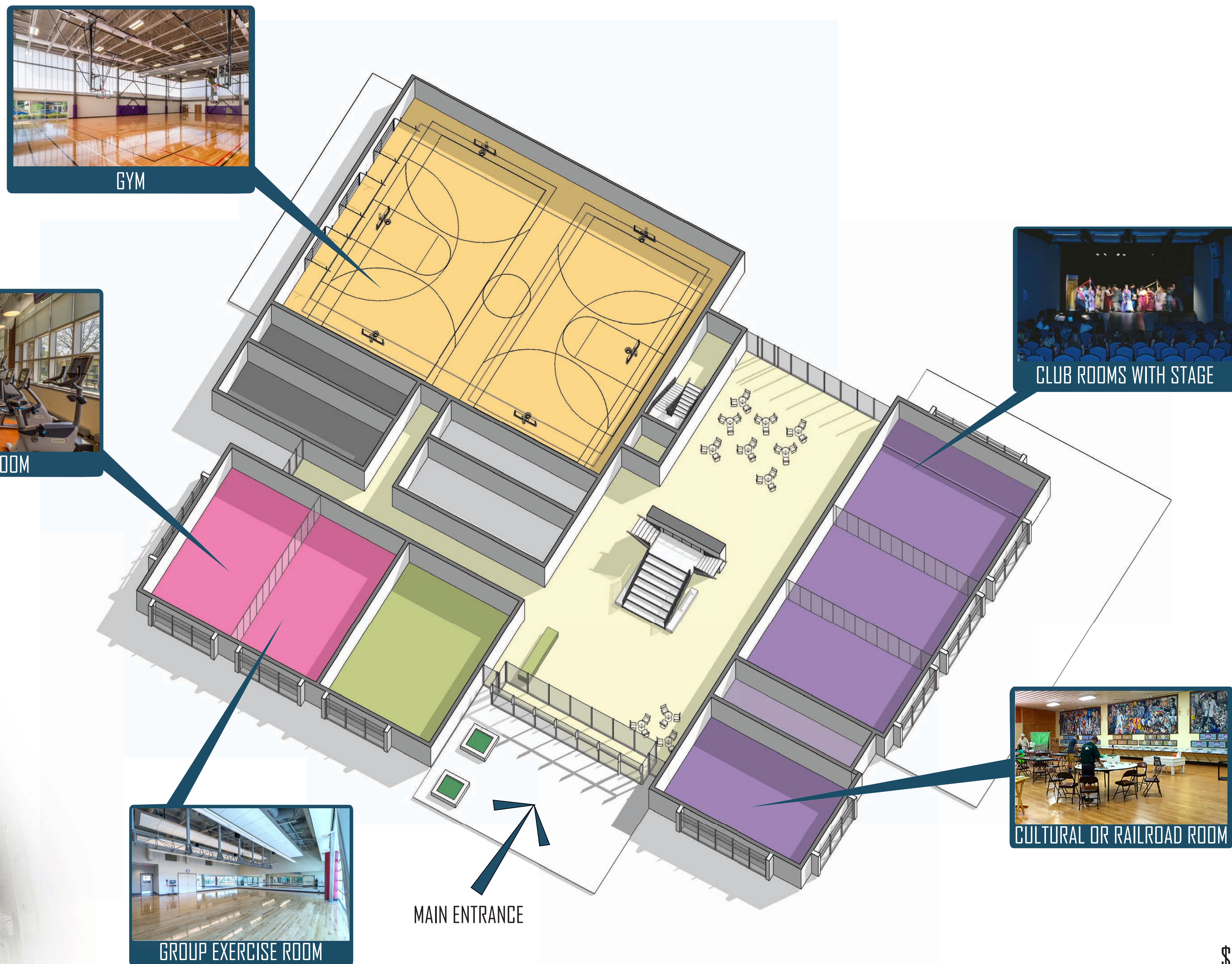
## Upper Floor

### LEGEND

- CLUB ROOM / CULTURAL PROGRAM / MODEL RAILROAD CLUB ROOM
- KITCHENETTE
- GROUP EXERCISE
- FITNESS
- GYM
- LOBBY, BREAK OUT SPACE, CIRCULATION
- ADMINISTRATION
- MECHANICAL / STORAGE
- RESTROOMS / LOCKERS
- ROOFTOP GARDEN
- ROOFTOP TERRACE
- MAIN ENTRANCE



## Ground Floor



⊕ SITE DIAGRAM

30,000 SF  
\$22,000,000

\*Disclaimer: cost estimates based on current probable 2019 construction cost in IL.

# CLARENDON COMMUNITY CENTER PARK